

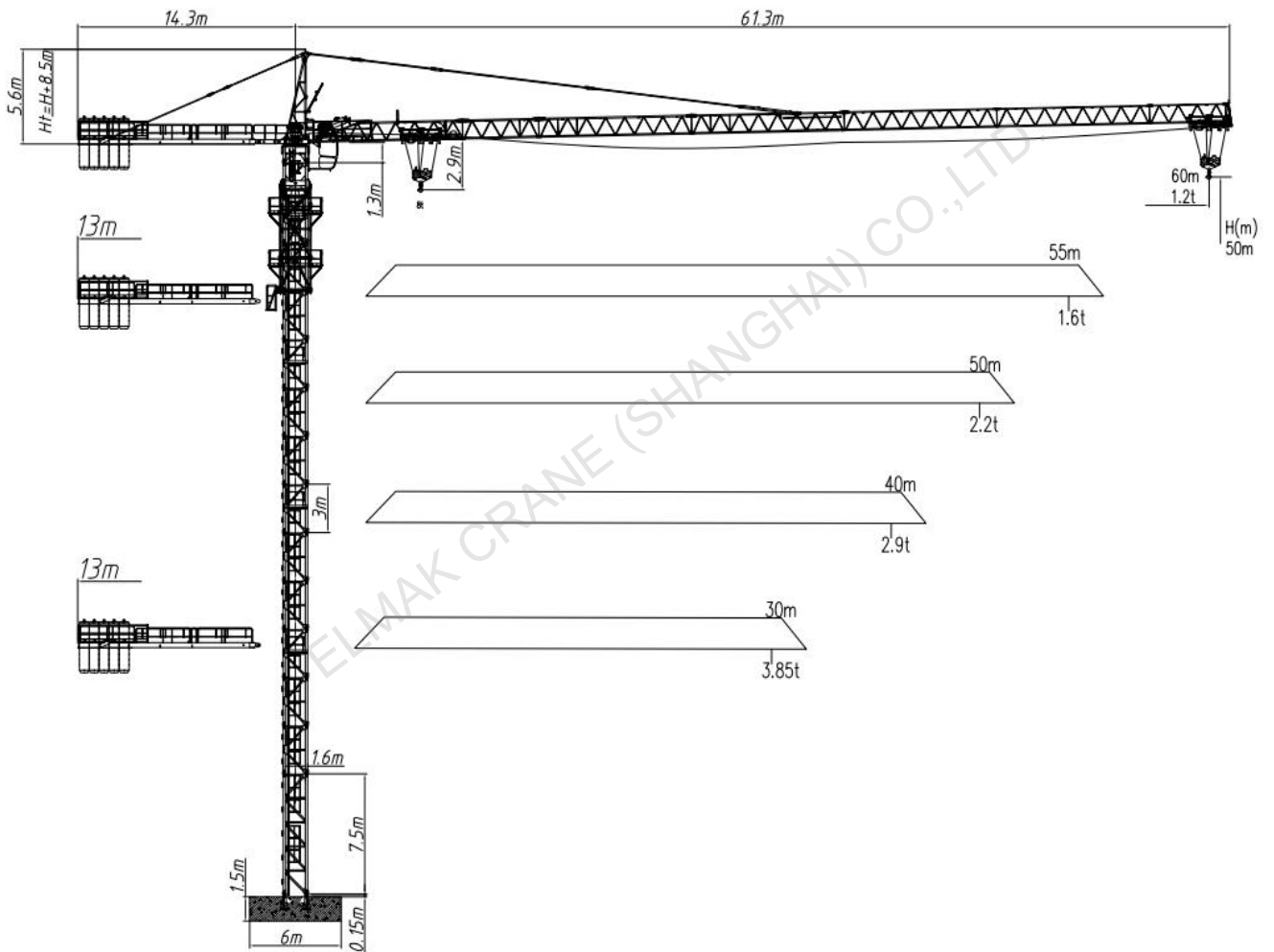
ELMAK[®]

ELMAK CRANE (SHANGHAI) CO.,LTD.



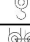
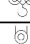



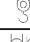
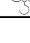

TOPKIT TOWER CRANE

www.elmaktowercrane.com

EMK6012-8

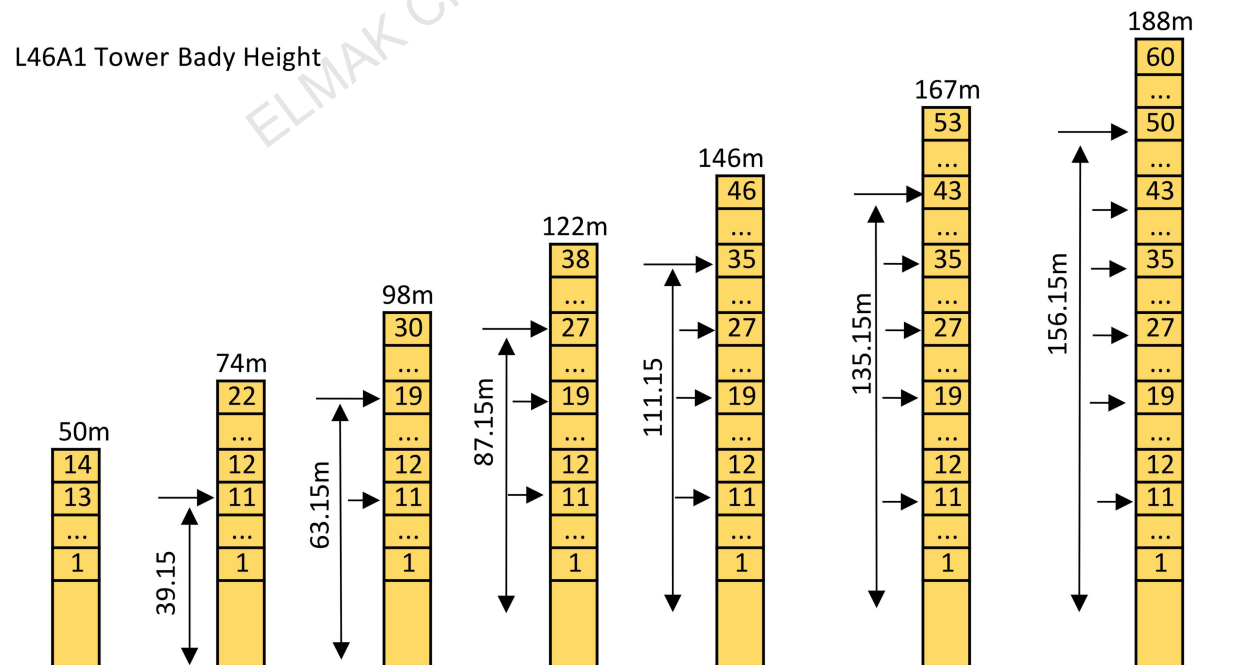


Loading Diagrams

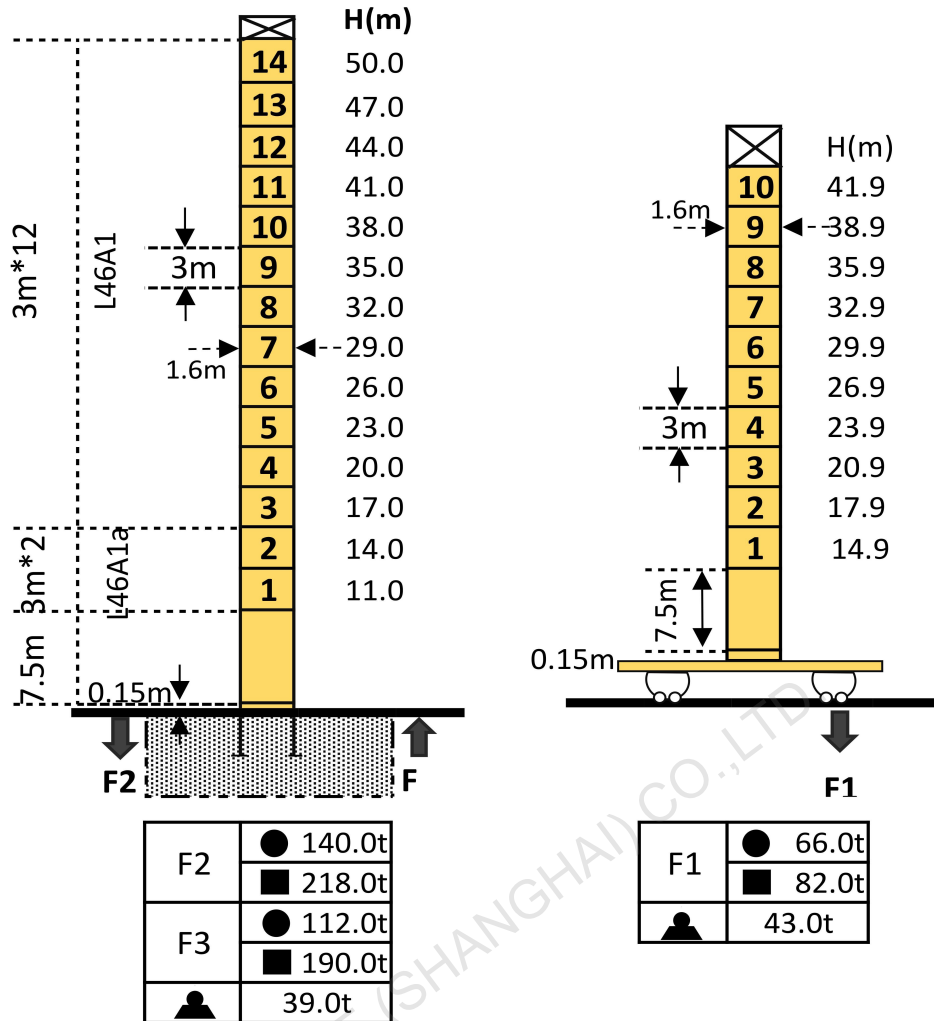
	Fall	Max.load		10.0	12.0	15.0	17.0	20.0	25.0	30.0	35.0	40.0	45.0	50.0	55.0	60.0
		R(Cmax) m	C(max) t													
60m		11.9	8.00	8.00	7.97	6.10	5.25	4.30	3.25	2.56	2.07	1.71	1.43	1.20	1.02	0.87
		22.7	4.00	4.00	4.00	4.00	4.00	4.00	4.00	3.58	2.89	2.40	2.04	1.76	1.53	1.35
55m		13.5	8.00	8.00	8.00	7.06	6.09	5.01	3.81	3.02	2.46	2.05	1.73	1.48	1.27	
		25.7	4.00	4.00	4.00	4.00	4.00	4.00	4.00	3.35	2.79	2.38	2.06	1.81	1.60	
50m		15.7	8.00	8.00	8.00	8.00	7.29	6.02	4.61	3.68	3.03	2.54	2.17	1.87		
		30.0	4.00	4.00	4.00	4.00	4.00	4.00	4.00	4.00	3.36	2.87	2.50	2.20		
40m		15.8	8.00	8.00	8.00	8.00	7.35	6.07	4.65	3.72	3.06	2.57				
		30.3	4.00	4.00	4.00	4.00	4.00	4.00	4.00	4.00	3.39	2.90				
30m		15.1	8.00	8.00	8.00	8.00	6.99	5.77	4.41	3.52						
		29.0	4.00	4.00	4.00	4.00	4.00	4.00	4.00	3.85						

Anchorage

L46A1 Tower Body Height



Mast-Reaction



Mechanisms

Items	Mechanisms	Speed/Hoist weight				Rope Capacity	Motor(KW)
		M/min	t	M/min	t		
Hoisting	40QP20HS-CG2	↓ ↑		↓ ↑		500m	30
		0-40	4	0-20	8		
		0-80	2	0-40	4		
Trolley	40BPX65	0~56m/min					4.0
Slewing	RCV95	0-0.8rpm					2*95N.M
Power Supply	380v(±10%)/50Hz						