

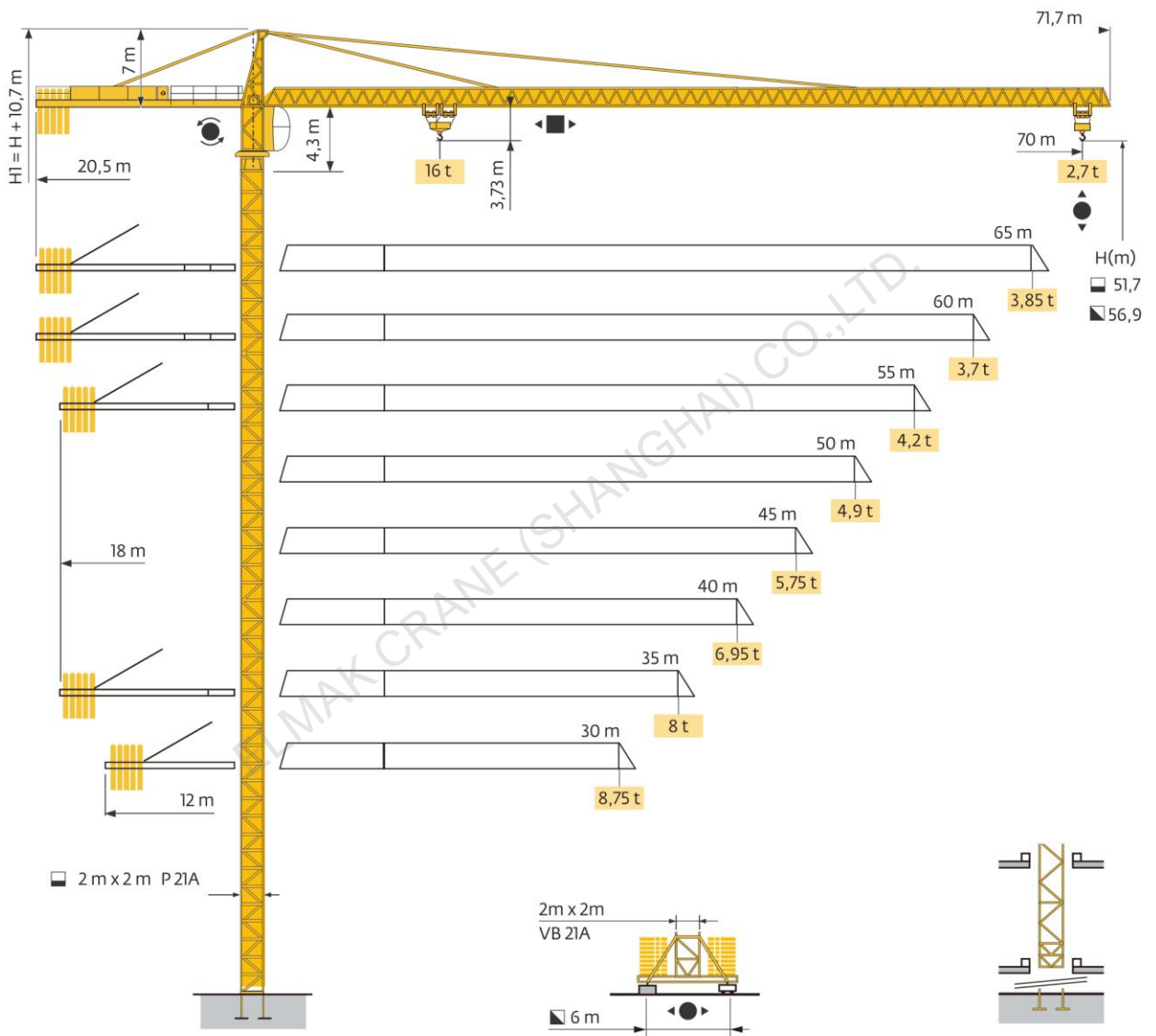
**ELMAK**<sup>®</sup>

ELMAK CRANE (SHANGHAI) CO.,LTD.

# TOPKIT TOWER CRANE

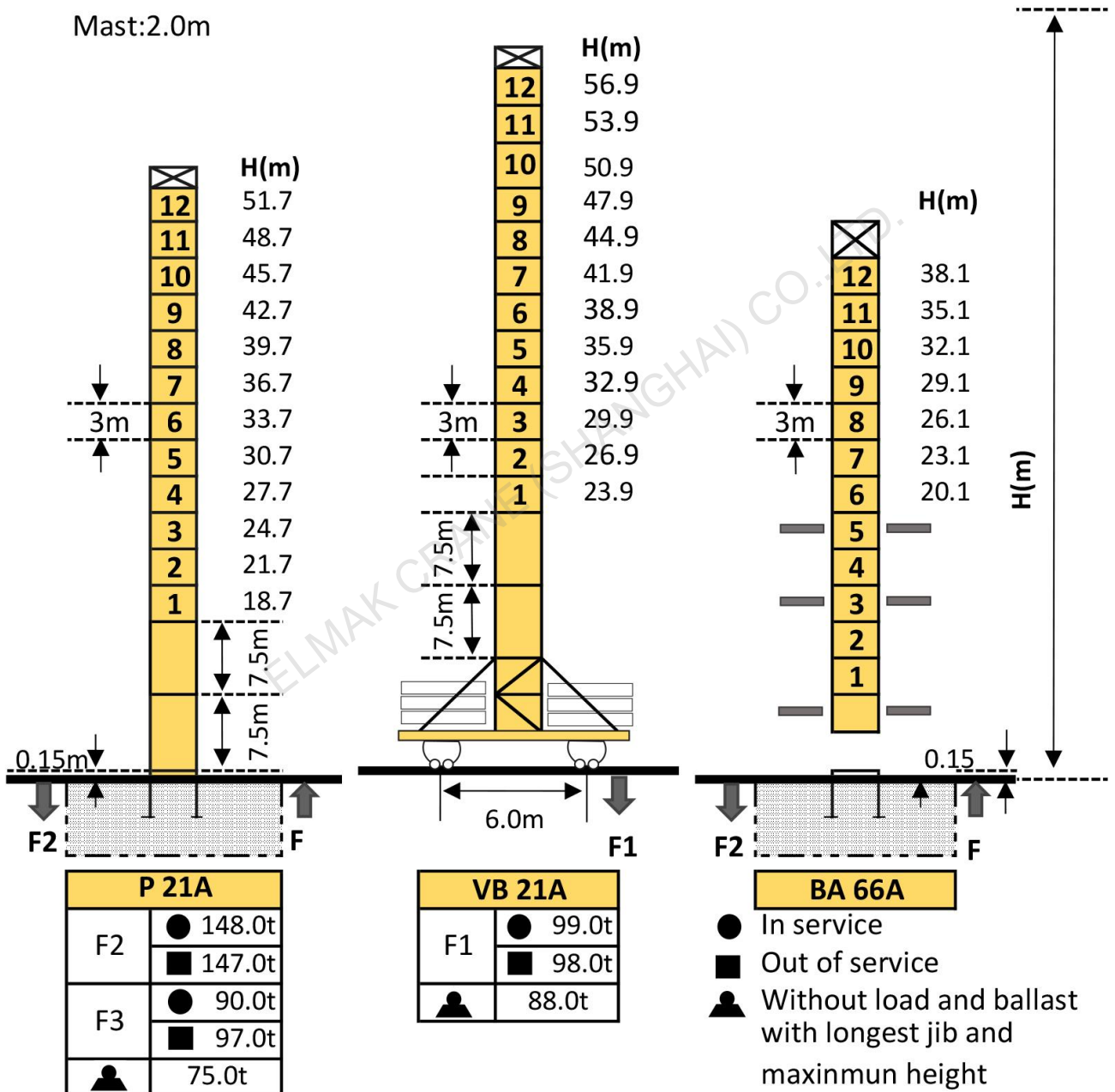
[www.elmaktowercrane.com](http://www.elmaktowercrane.com)

**EMK7027-16**



**Mast-Reaction**

Mast: 2.0m

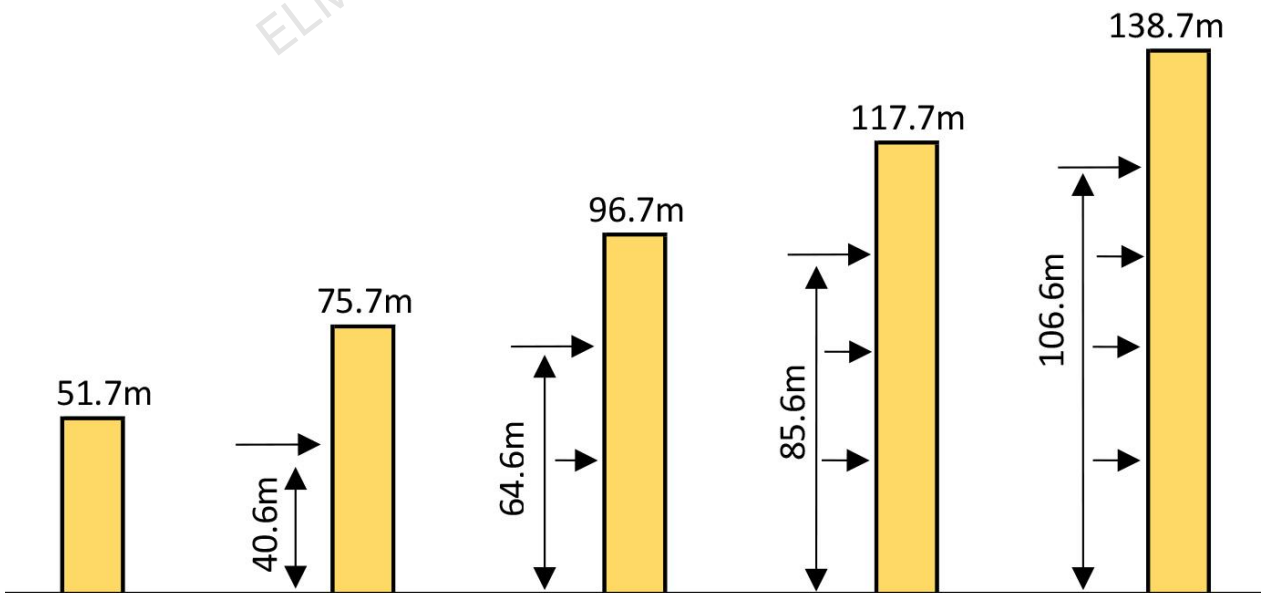


## Loading Diagrams

70m	3.1	16.1	17.0	20.0	22.0	25.0	27.0	27.7	31.0	32.0	35.0	37.0	40.0	42.0	45.0	47.0	50.0	52.0	55.0	57.0	60.0	62.0	65.0	67.0	70.0	m
		16.0	15.0	12.2	10.8	9.20	8.30	8.00	8.00	7.70	6.90	6.50	5.80	5.50	5.00	4.70	4.40	4.10	3.80	3.70	3.40	3.20	3.00	2.90	2.70	t
65m	3.1		17.1	20.0	22.0	25.0	27.0	29.6	32.9	35.0	37.0	40.0	42.0	45.0	47.0	50.0	52.0	55.0	57.0	60.0	62.0	65.0			m	
			16.0	13.2	11.7	10.0	9.00	8.00	8.00	7.40	7.00	6.30	6.00	5.50	5.20	4.80	4.50	4.2	4.0	3.70	3.6	3.35			t	
60m	3.1		17.1	20.0	22.0	25.0	27.0	29.6	32.9	35.0	37.0	40.0	42.0	45.0	47.0	50.0	52.0	55.0	57.0	60.0					m	
			16.0	13.2	11.7	10.0	9.00	8.00	8.00	7.40	7.00	6.30	6.00	5.50	5.20	4.80	4.50	4.2	4.0	3.70					t	
55m	3.1		17.1	20.0	22.0	25.0	27.0	29.6	32.9	35.0	37.0	40.0	42.0	45.0	47.0	50.0	52.0	55.0							m	
			16.0	13.2	11.7	10.0	9.00	8.00	8.00	7.40	7.00	6.30	6.00	5.50	5.20	4.80	4.50	4.2							t	
50m	3.1		17.4	20.0	22.0	25.0	27.0	29.6	32.9	35.0	37.0	40.0	42.0	45.0	47.0	50.0									m	
			16.0	13.5	12.0	10.2	9.30	8.00	8.00	7.60	7.10	6.50	6.10	5.60	5.30	4.90									t	
45m	3.1		17.8	20.0	22.0	25.0	27.0	30.8	34.3	35.0	37.0	40.0	42.0	45.0											m	
			16.0	13.8	12.3	10.5	9.50	8.00	8.00	7.80	7.30	6.70	6.30	5.75											t	
40m	3.1		18.4	20.0	22.0	25.0	27.0	30.0	32.0	35.6	37	40													m	
			16.0	14.5	12.9	11.0	10.0	8.7	8.0	8.0	7.6	6.95													t	
35m	3.1		18.4	20.0	22.0	25.0	27.0	30.0	32.0	35.6															m	
			16.0	14.5	12.9	11.0	10.0	8.7	8.0	8.0															t	
30m	3.1		18.6	20.0	22.0	25.0	27.0	29.0	30.0																m	
			16.0	14.6	13.0	11.1	10.0	9.15	8.75																t	

## Anchorage

P 20A

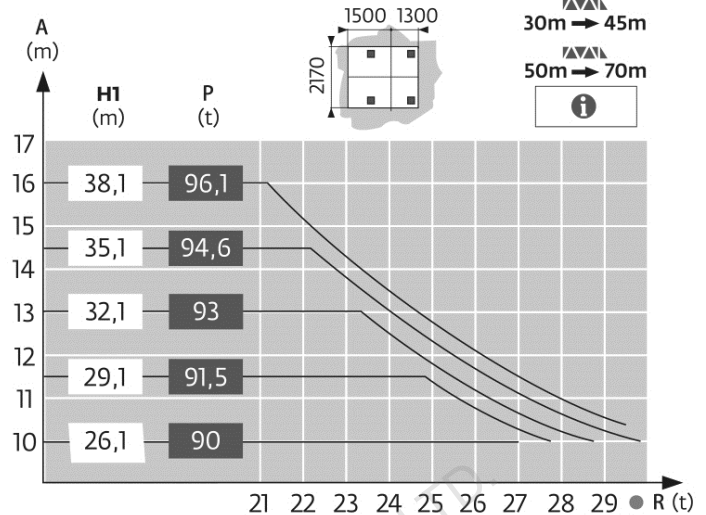
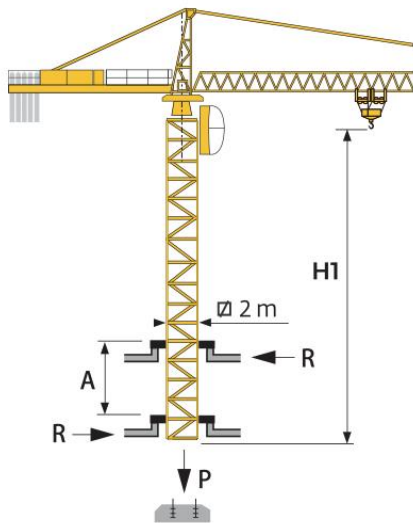


## Climbing Crane

**BA 66 A**

30m → 45m

50m → 70m



A Distance between collars  
P Crane weight(in service)

H1 Crane height  
R Horizontal reaction

## Mechanisms

Items	Mechanisms	Speed/Hoist weight				Rope Capacity	Motor(KW) 400V 50Hz
		M/min	t	M/min	t		
Hoisting	75LVF40	↓ ↑		↓ ↑		700m	75
		0-44	8	0-22	16		
		56	6	28	12		
		76	4	38	8		
		117	2	58.5	2.9		
Trolleying	6DVF6	0-42(16t)-84(8t)-100(4t)r/min					4
Slewing	145SVT	0-0.7rpm					2*5.5
Traveling	55TRVF	13.5-27m/min					4*5.2
Necessary Electric Power		100LVF:125KVA/150LCC 175KVA					
Main electrical components: Schneider (Frequency converter, Contactor, Relay)							