

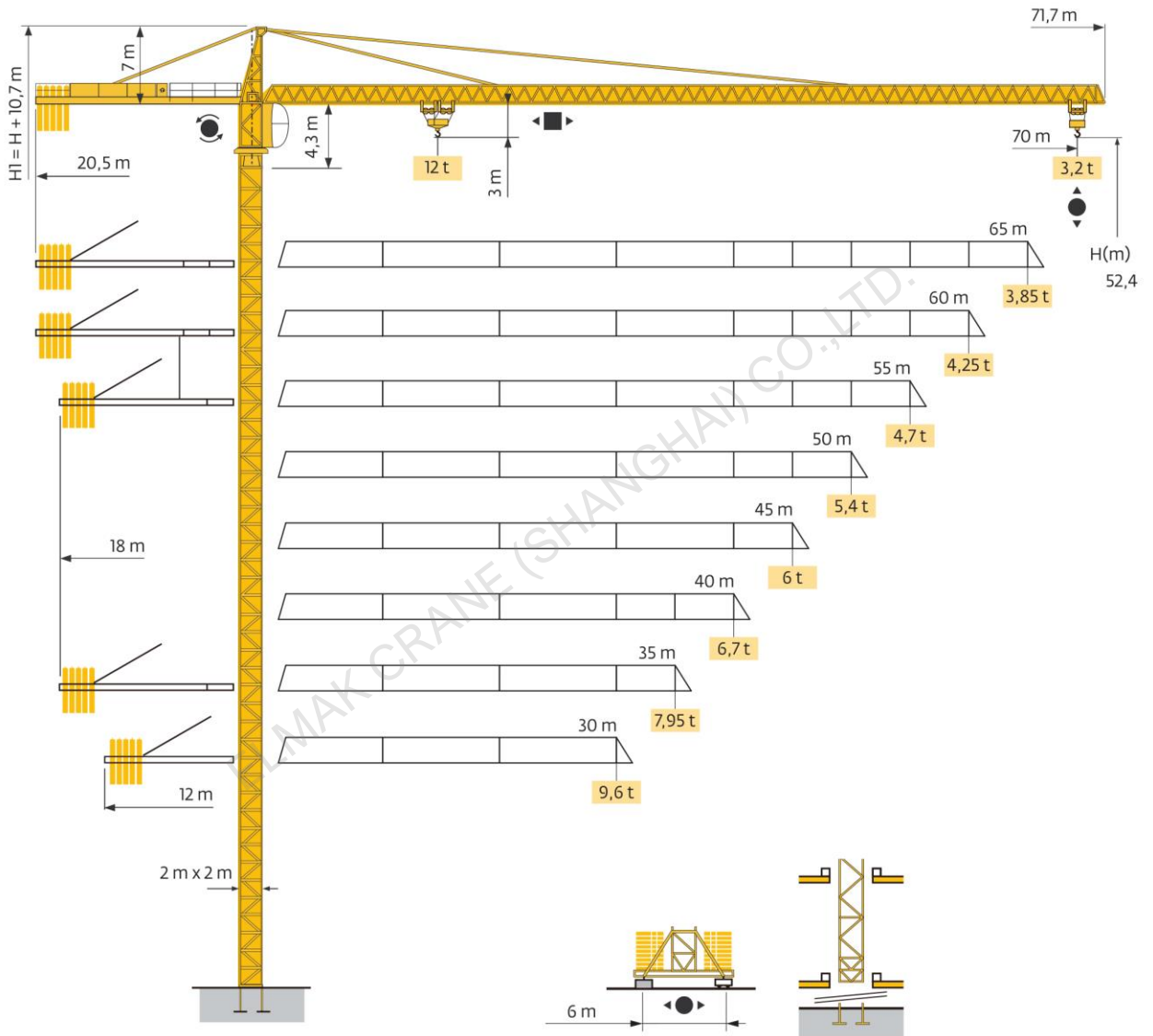
ELMAK[®]

ELMAK CRANE (SHANGHAI) CO.,LTD.

TOPKIT TOWER CRANE

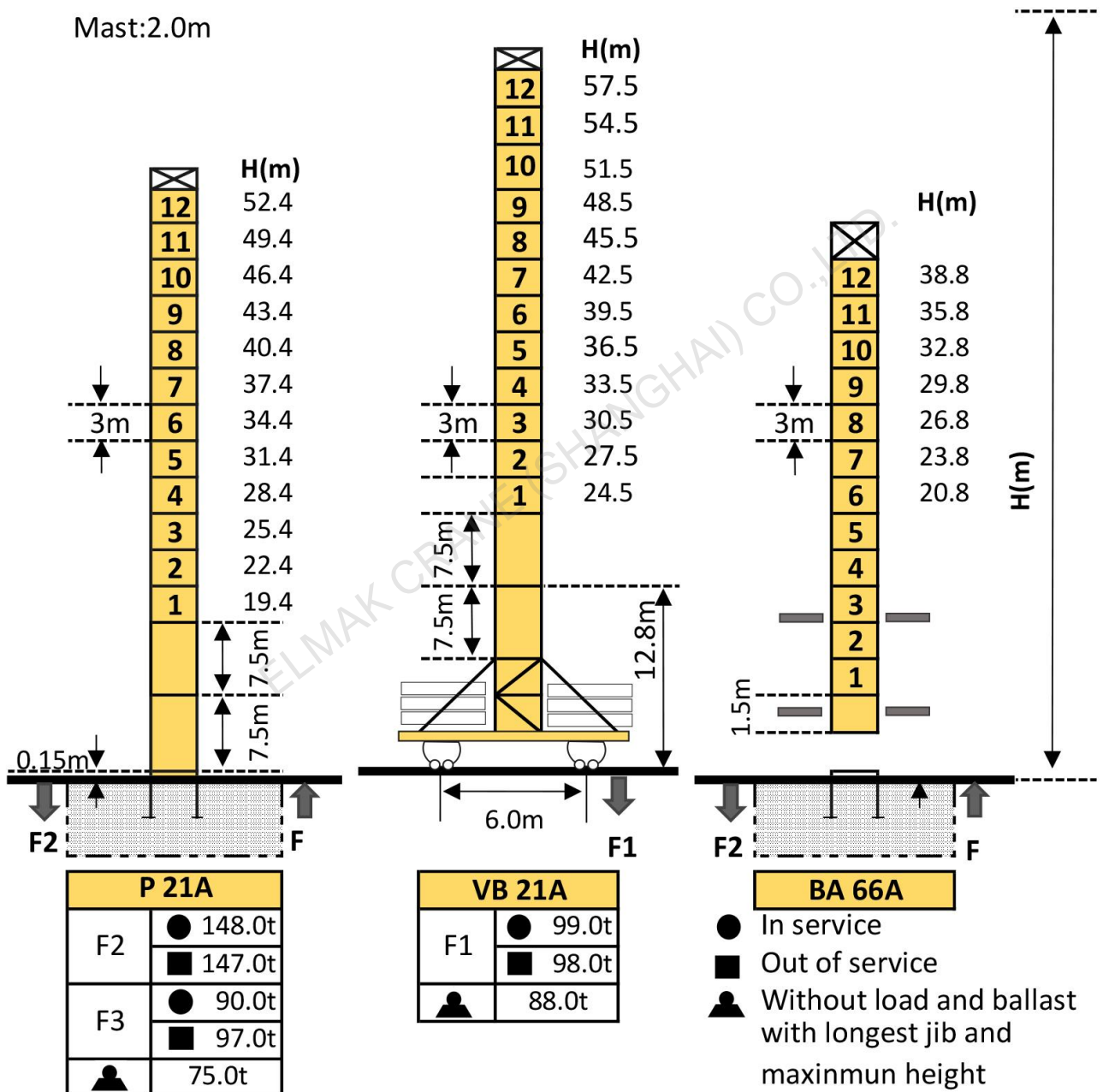
www.elmaktowercrane.com

EMK7032-12

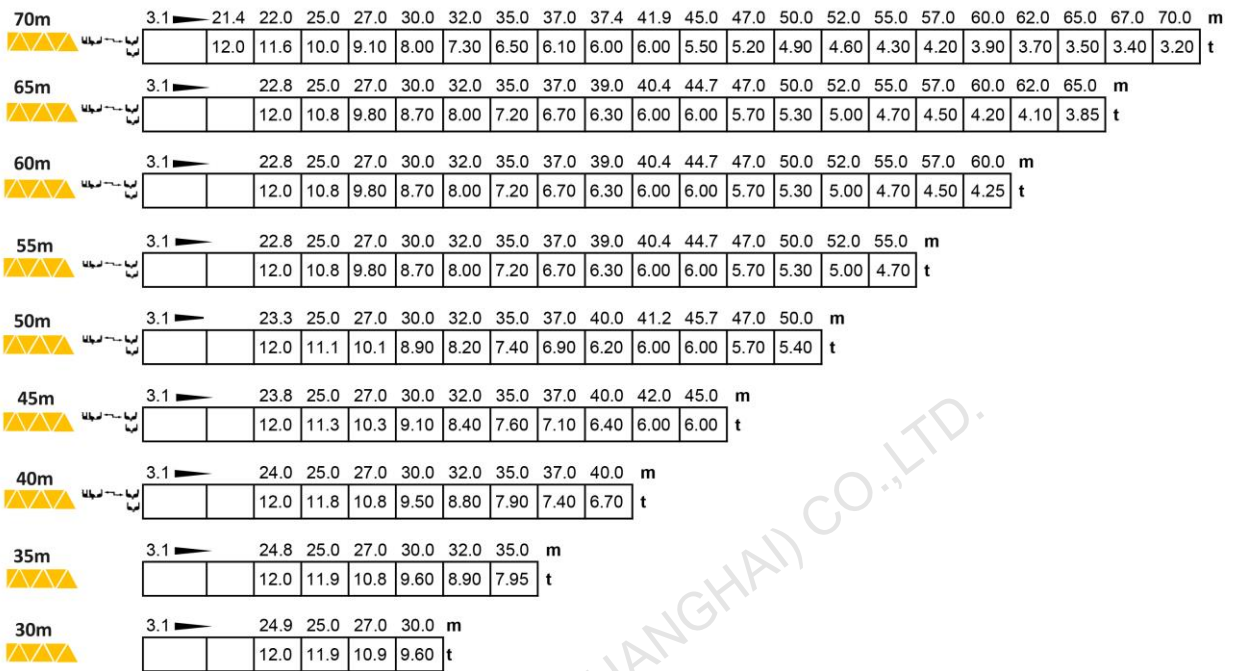


Mast-Reaction

Mast:2.0m

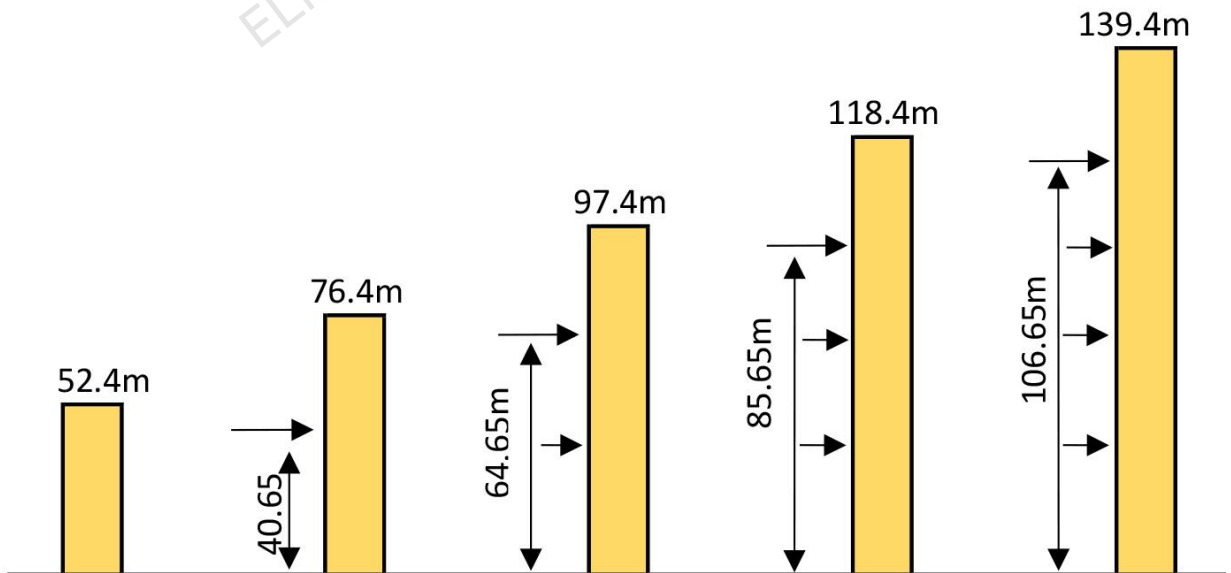


Loading Diagrams

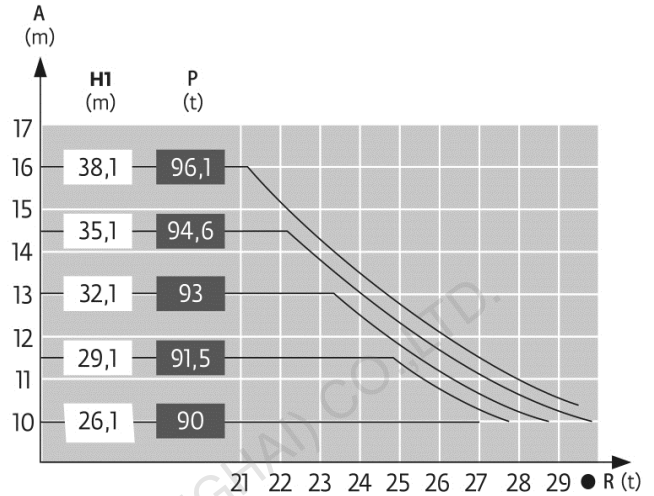
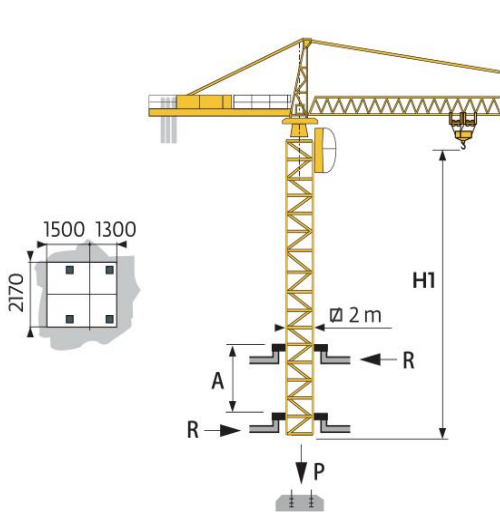


Anchorage

P 20A



Climbing Crane



A Distance between collars
P Crane weight(in service)

H1 Crane height
R Horizontal reaction

Mechanisms

Items	Mechanisms	Speed/Hoist weight				Rope Capacity	Motor(KW) 400V 50Hz
		M/min	t	M/min	t		
Hoisting	70RCS 30	↓ ↑		↓ ↑		523m	51
		0-40	6	0-20	12		
	75LVF30	0-80	3	0-40	6	570m	55
		44	6	22	12		
		56	4.5	28	9		
		80	3	40	6		
		116	1.5	58	3		
Trolleying	6D3V4	15-50(12t)-100(6t)r/min					5.4
Slewing	RVF162	0-0.7rpm					2*5.5
Traveling	RT544 A1 2V R ≥ 13m	13.5-27m/min					4*5.2
Necessary Electric Power		70RCS :110KVA/75LVF:100KVA					
Main electrical components: Schneider (Frequency converter, Contactor, Relay)							