

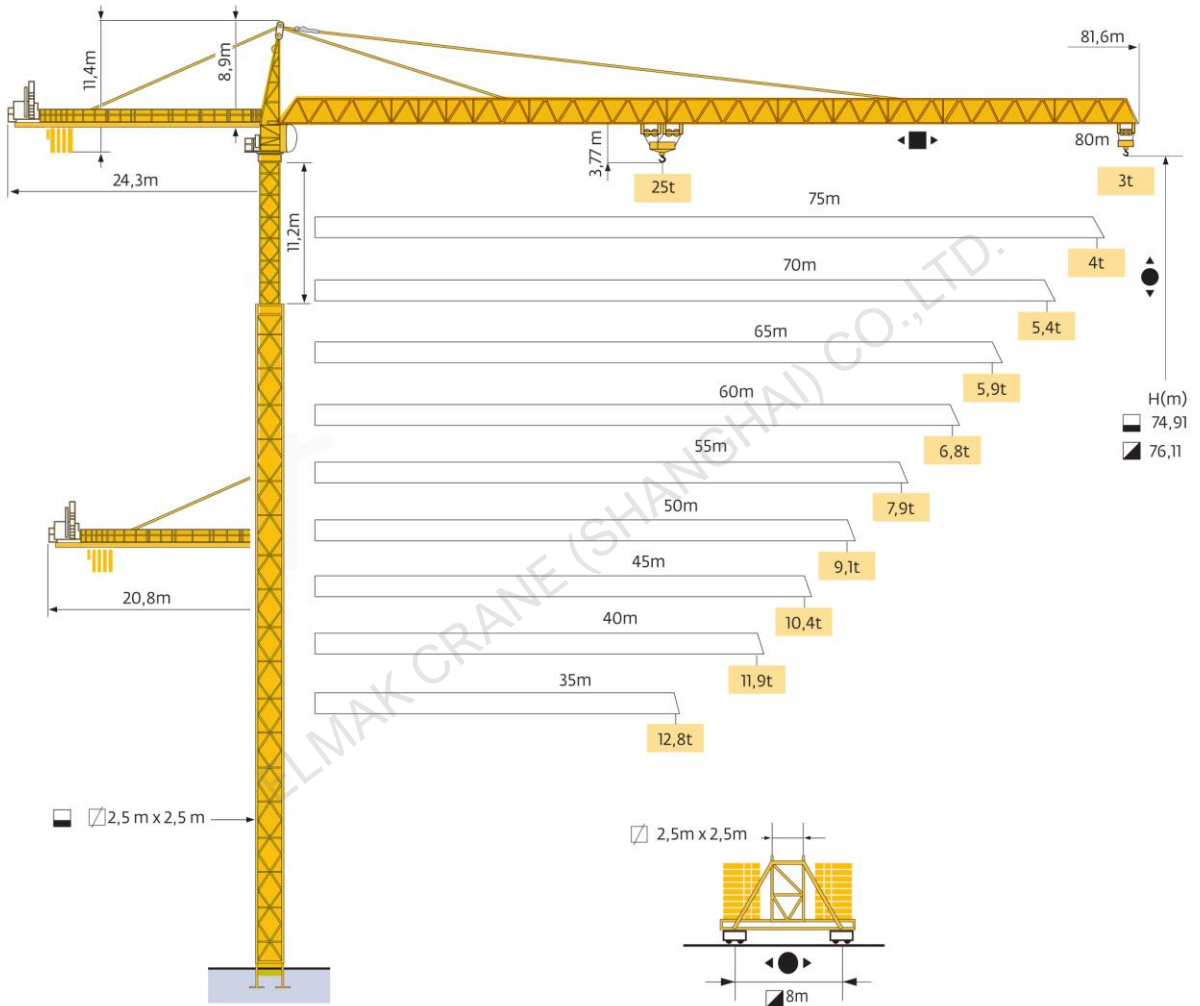
ELMAK[®]

ELMAK CRANE (SHANGHAI) CO.,LTD.

TOPKIT TOWER CRANE

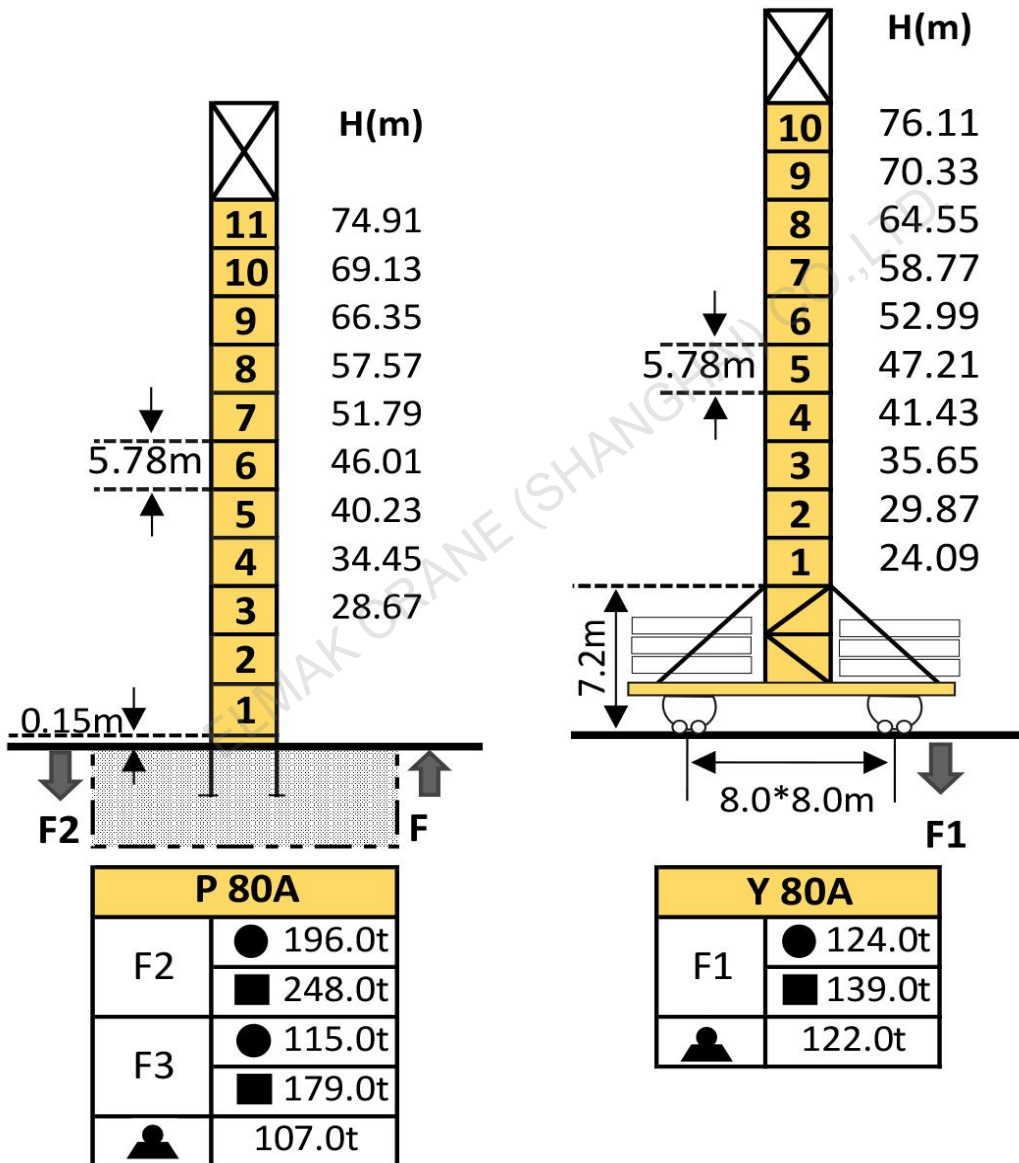
www.elmaktowercrane.com

EMK8030-25



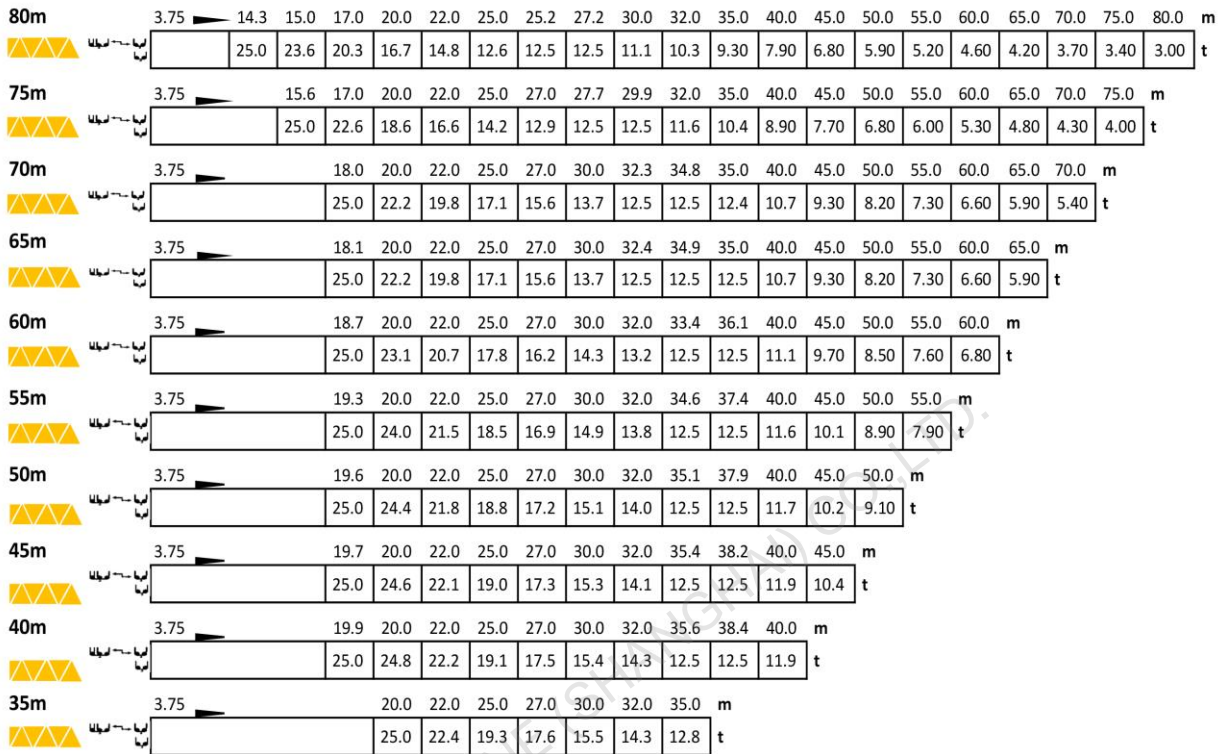
Mast-Reaction

Mast:2.5*2.5m



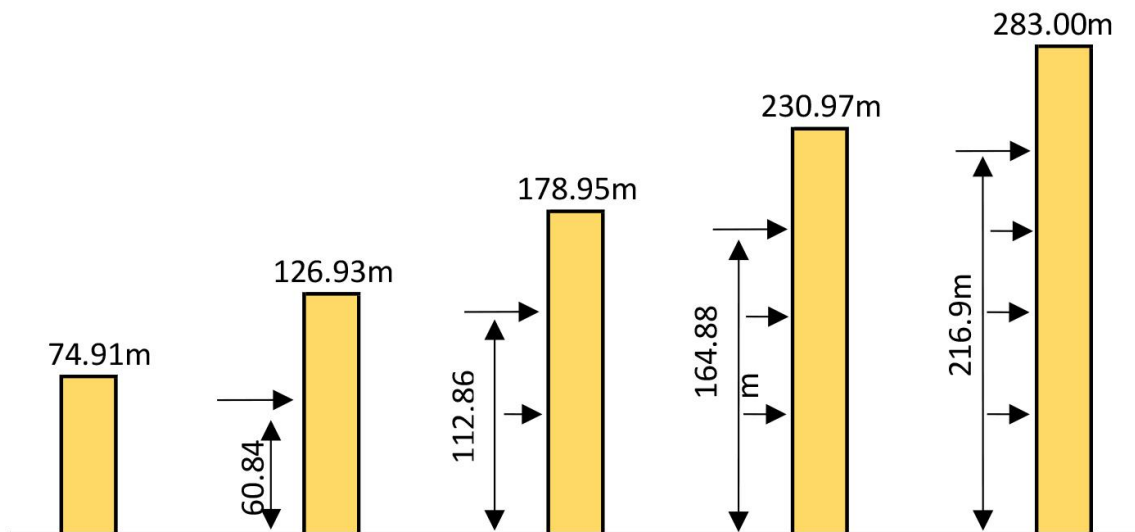
- In service
- Out of service
- Person Without load and ballast with longest jib and maximum height

Loading Diagrams

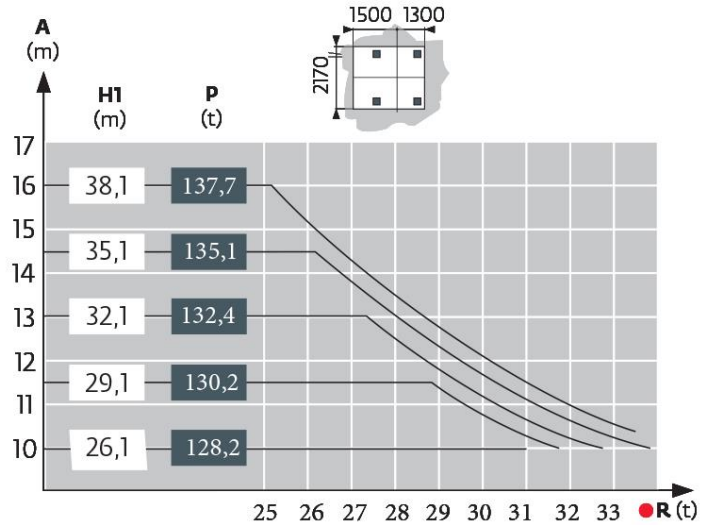
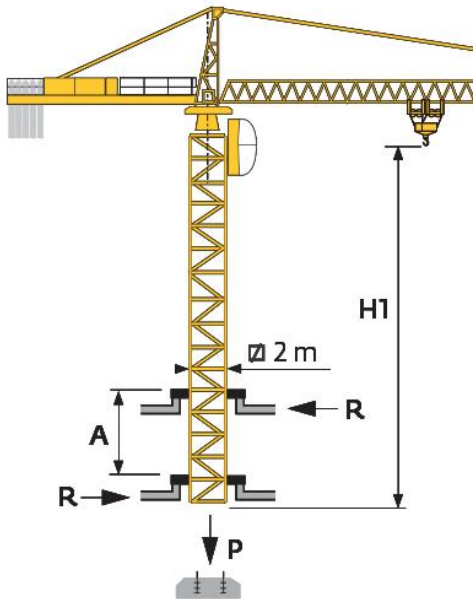


Anchorage

P 80A



Climbing Crane



Mechanisms

Items	Mechanisms	Speed/Hoist weight				Rope Capacity	Motor(KW) 400V 50Hz
		M/min	t	M/min	t		
Hoisting	100LVF63	↓ ↑		↓ ↑		480m	75
		0-30	12.5	0-15	25		
		40	9	20	18		
		57	6	28.5	12		
		78	2.7	39	5.4		
Trolleying	10DVF10	0-64(25t) 0-100(12.5t) 0-110(6.25t)					7.4
Slewing	RVF183	0-8r/min					3*9
Traveling	RT544 A1 2V R≥13m	16-32m/min					6*5.2
Necessary Electric Power		100LVF :180KVA					
Main electrical components: Schneider (Frequency converter, Contactor, Relay)							