

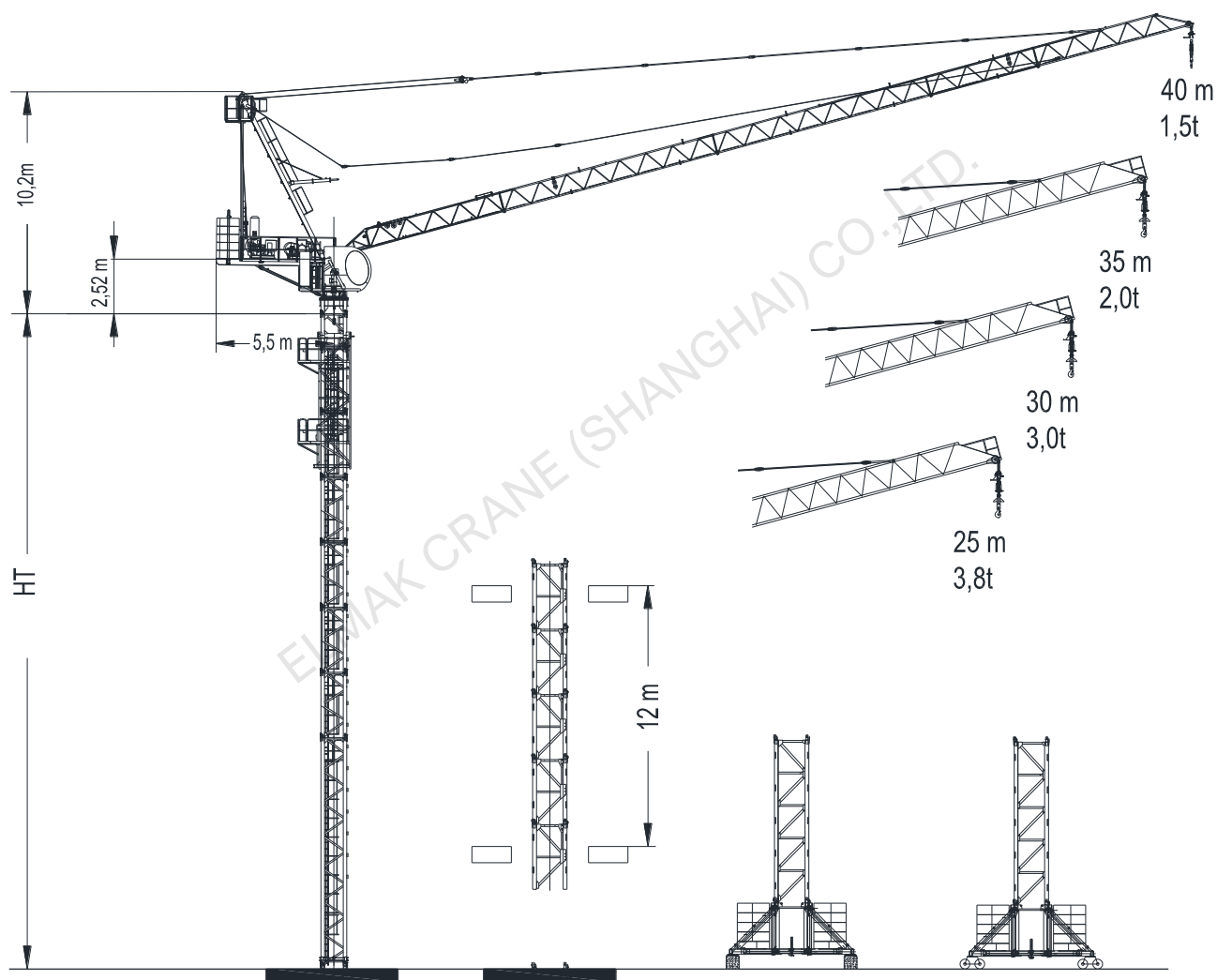
ELMAK[®]

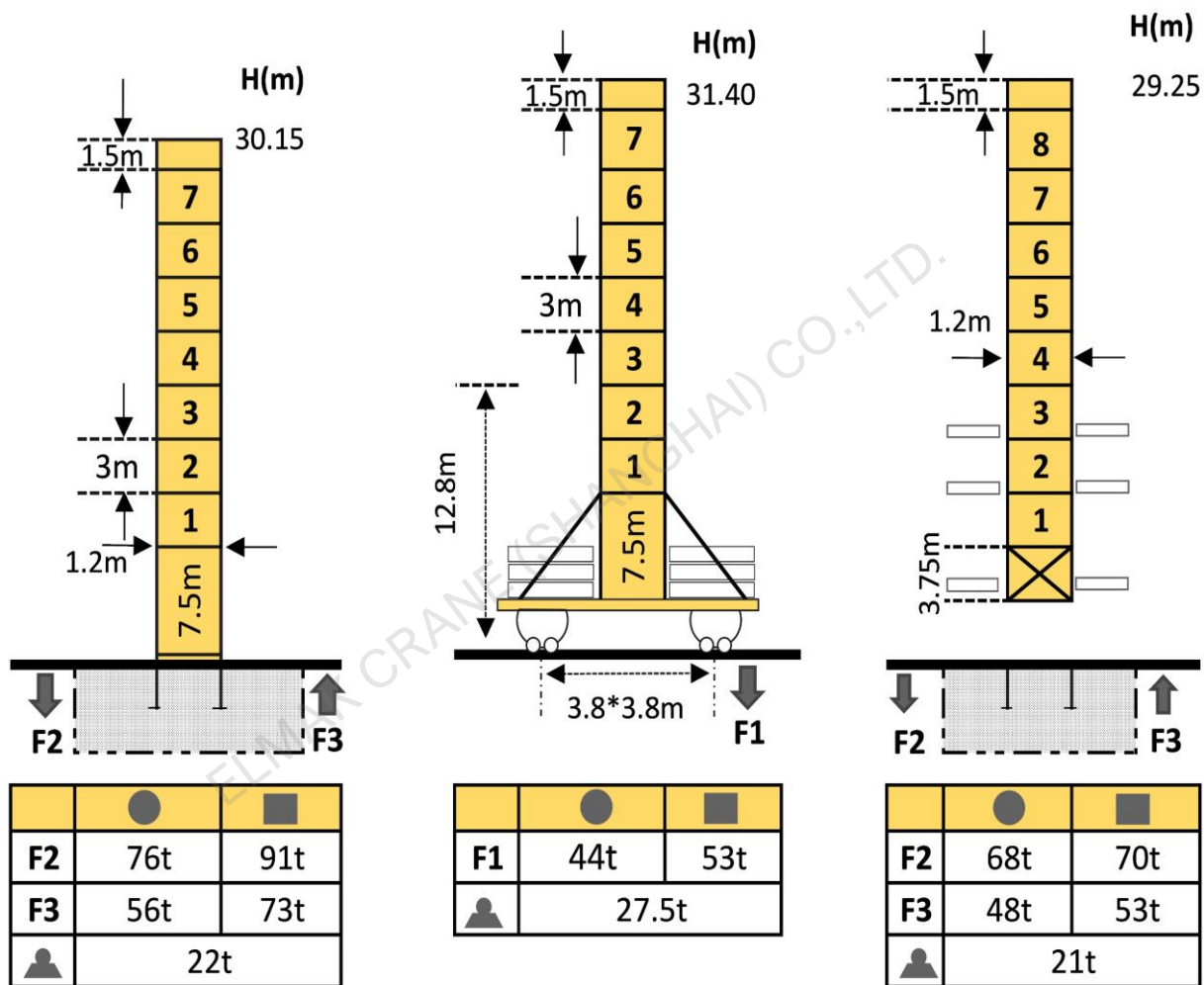
ELMAK CRANE (SHANGHAI) CO.,LTD.

LUFFING TOWER CRANE

www.elmaktowercrane.com

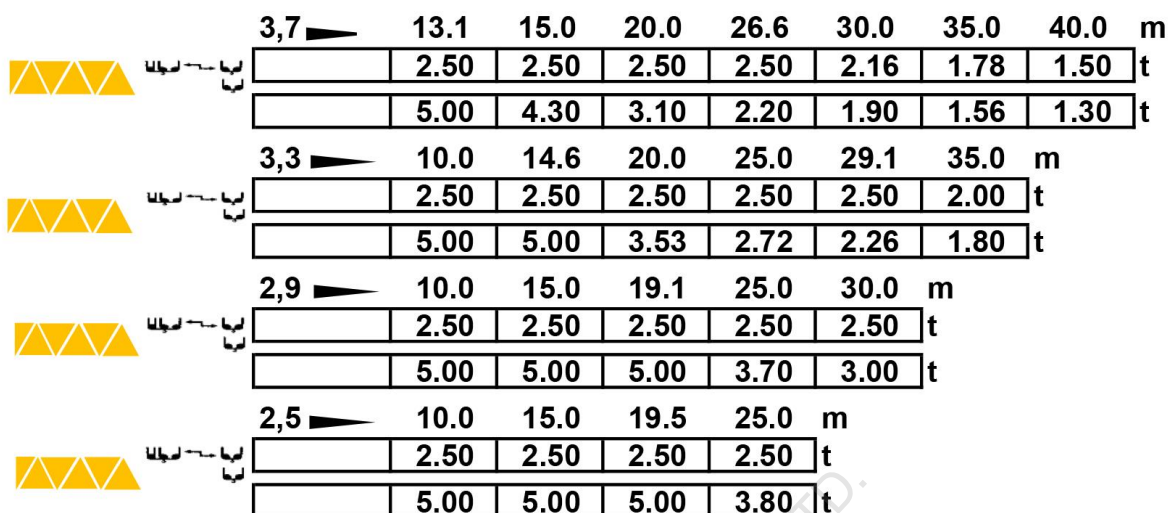
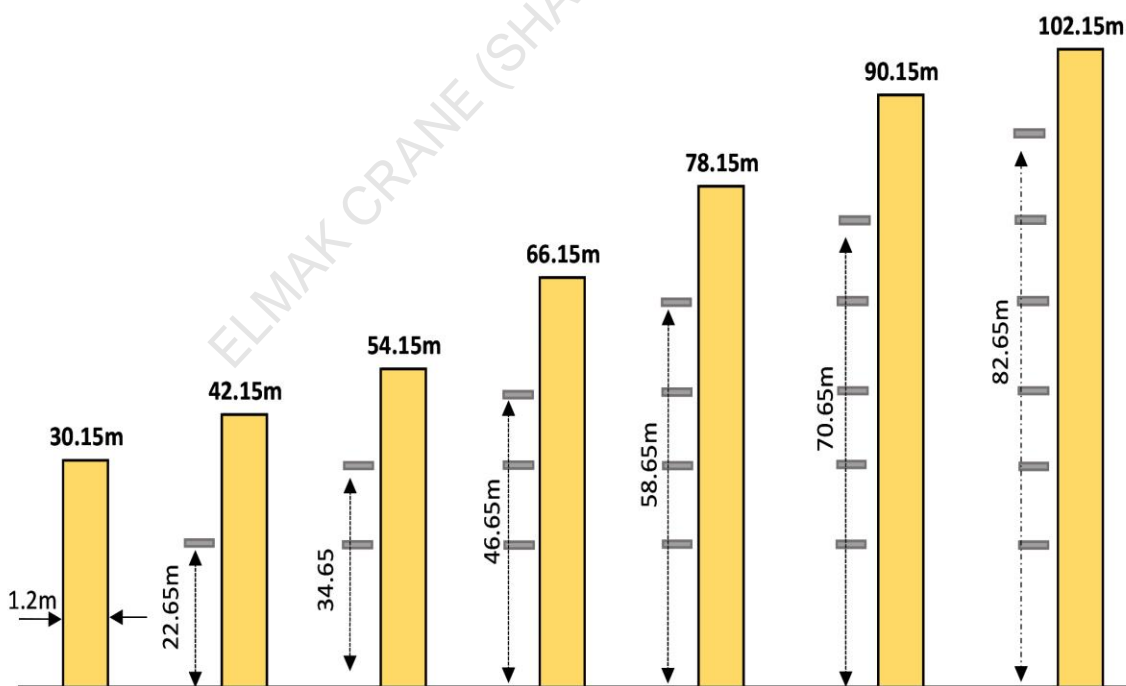
EML4015-5

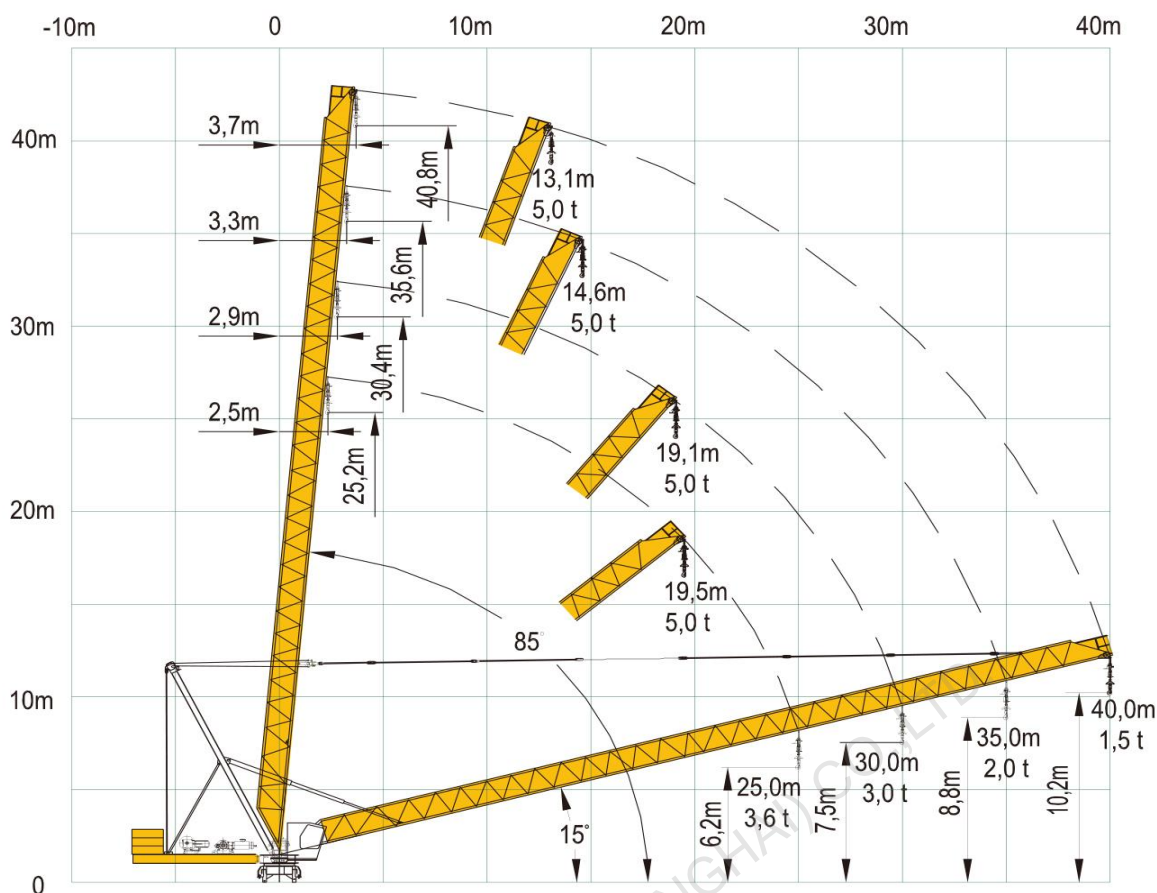


Mast-Reaction


👤 Total weight of free standing height(exclude counter weight ballast)

● In service ■ Out of service **F** Reactions

Loading Diagrams

Anchorage


Luffing jib

Mechanisms

Items	Mechanisms	Speed/Hoist weight				Rope Capacity	Motor(KW)	
		M/min	t	M/min	t		400V 50Hz	480V 60Hz
Hoisting	30QP15 HS-CG2	↓ ↑		↓ ↑		360m	18.5	22.2
		6	2.5	3	5			
		34	2.5	17	5			
		67	1.3	33.5	2.6			
Luffing	33LP15HS	2m/min					24	22.2
Slewing	RCV60	0~0.8rpm					4	5
Necessary Electric Power		30KVA/36KVA						
Main electrical components: Schneider (Frequency converter, Contactor, Relay)								